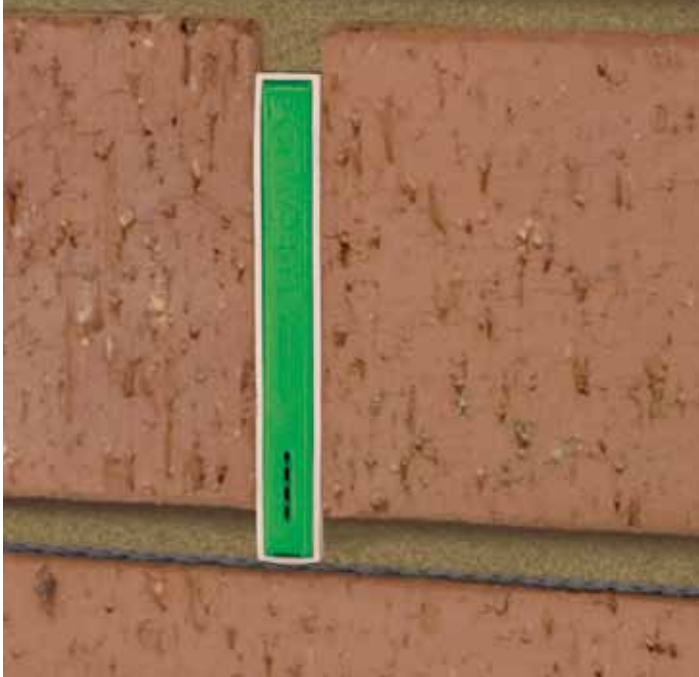


70mm Standard Weepa



Installation guide for weep holes in masonry

Step 1



Install the Weepa between bricks or blocks, at specified intervals and firmly in contact with the flashing. For rendering, set out a few millimetres.

Step 2



When rendering, the Weepa needs to be loosened in the masonry so the renderer can adjust the Weepa in and out. Grab internal rib to adjust Weepa in and out.

Step 3



After clean up, use a small, flat screwdriver to prise the mortar cover up at the bottom.

Step 4



Close the grate assembly for an attractive and vermin proof weep hole.

70mm Standard Weepa



Installation guide for weep holes in rendered masonry

Step 1



Make sure the new Weepa is installed when the masonry wall is built.

Step 2



Loosen the Weepa and pull out proud of masonry.

Step 3



Lay on render around the Weepa.

Step 4



Screed off around the Weepa.

Step 5



Pat the Weepa flush with the surface.

Step 6



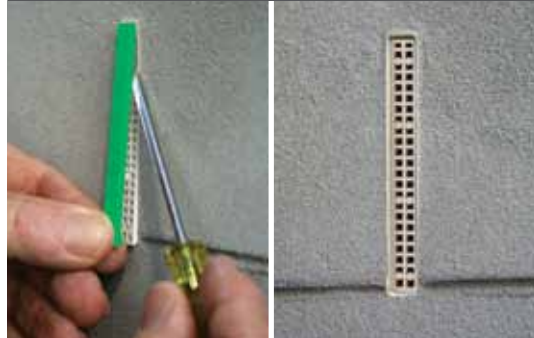
Float around the Weepa.

Step 7



Sponge finish.
For easy removal later, wipe the mortar guard clean now, then again after painting.

Step 8



After finish and clean-up remove the mortar guard for beautiful weepholes.

70mm Standard Weepa



Installation guide for weep holes in rendered lightweight panel

Step 1



Mark the outline of the weep hole on each board at recommended centres and between each batten, then cut out with a jab saw.

Step 2



Fix board as recommended by supplier.

Attention: Weepa does not encourage cutting out weep hole after fixing as this could compromise the waterproof membrane.

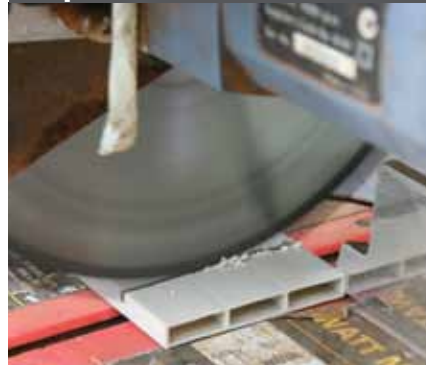
Step 3



Check Weepa depth at back to ensure adequate clearance of studs and flashing.

Ventilation must not be impeded

Step 4



If necessary, cut the back off the Weepa and remove dags.



Step 5



Apply recommended glue to Weepa and push into weep hole slot so it acts as formwork for coating or finish.



Smooth off excess glue. Allow to dry.

Step 6

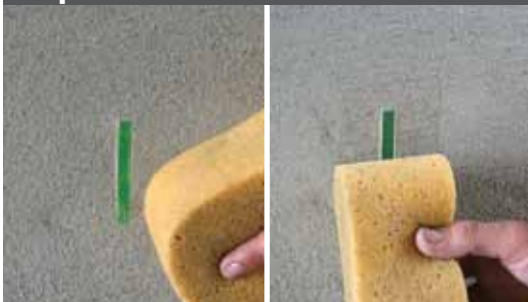


Apply render or coating.

Screed as desired.



Step 7



Sponge as required. Clean the Weepa cover of excess render, finish and paint at each stage.

Step 8



After final finish and clean up remove cover.

End result: beautiful and functional Weepa weep holes!